

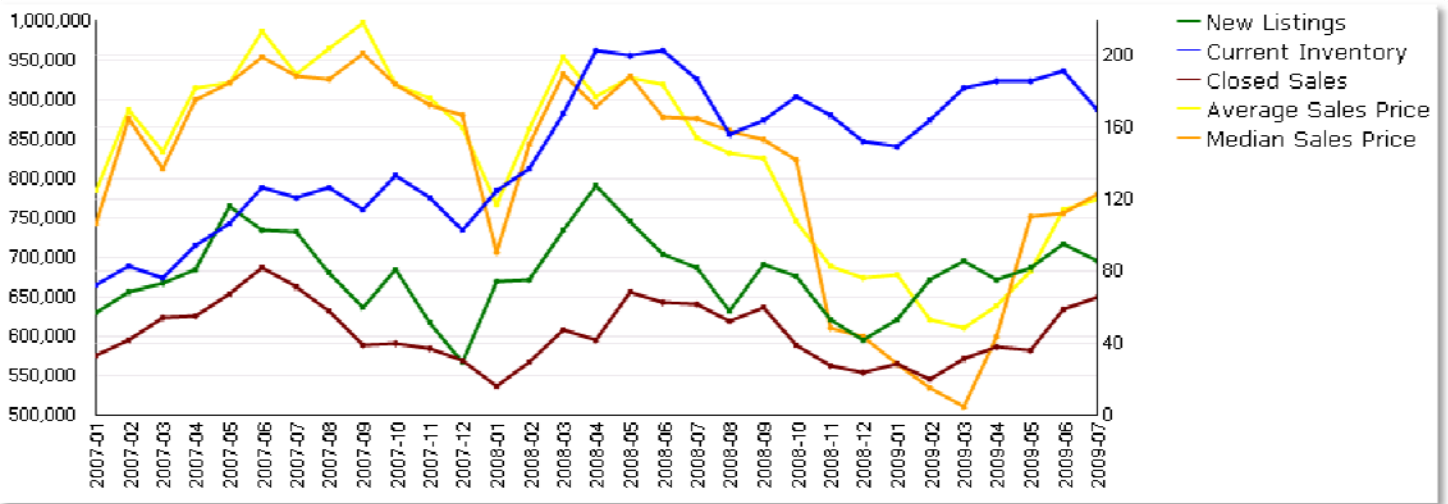


Sunnyvale market data includes the entire city. The trends are quite different depending on where in Sunnyvale properties are located. Generally the northeast area is a lower price point, while southwest Sunnyvale is adjacent to Los Altos with Cupertino schools and is quite different. Contact me if you have questions about a specific property or market area.

Sunnyvale

Sales activity trend report – 01/2007 to 07/31/2009

SFRs



Condo / PUDs

